



Frequently Asked Questions

Water Closet Replacement

Published: 9 June 2017

Last Updated: 23 January 2018

Frequently Asked Questions

1. Who is eligible for this project?

Households living in HDB flats built between 1987 and 1992 and that are currently placed on community assistance schemes will be eligible for this project. From June 2017, these homes can look out for a notification letter from PUB, which will offer more details on this project. Terms and conditions apply.

2. Is the replacement of water closet complimentary for eligible households?

For eligible households, they can receive the replacement service free-of-charge.

- Replace a non-water efficient 9 litres water closet (WC) with a water efficient WC (4 litres per full flush)
- Replace all non-water efficient basin and kitchen sink taps and mixers

3. What is a water efficient water closet?

A water efficient water closet is 2-tick rated under the Mandatory Water Efficient Labelling Scheme. It uses water that does not exceed 4.5 litres for each full flush and 3 litres for each half flush.

4. How do I know if my households are installed with non-water efficient water closets?

You can use the search tool on the Water Closet Replacement Project webpage to find out when your flat was built. If your flat was built between 1987 and 1992, and you have not done any renovation, your water closet(s) is/are likely to be of the non-water efficient 9 litres model.

5. Why does the Water Closet Replacement Project cater only to HDB flats built between 1987 and 1992?

Since 1992, HDB has discontinued the installation of 9 litres water closets in new and upgraded HDB flats.

Older HDB flats built before 1987 would have been eligible to upgrade their existing toilet(s)/bathroom(s) and replace their 9 litres water closets as an optional improvement component under the HDB's Home Improvement Programme.

This project hence caters to the needs of the HDB flats built between 1987 and 1992.

6. What is the expected amount of water you can save after the replacement of water closet?

You can expect to save about 20 litres of water per person per day after replacement. This assumption is made based on an average of four flushes per person per day. In short, households can expect to save as much as 10% of their water bills after the replacement.

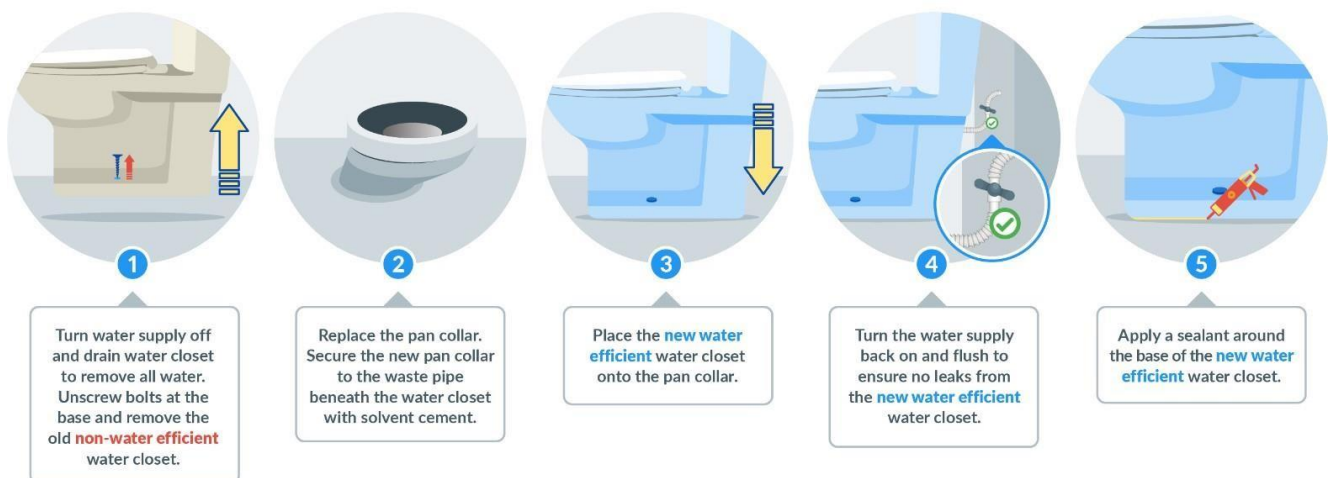
7. Will the flushing performance of a water efficient water closet be poorer than a non-water efficient one?

This model of water efficient water closet selected for this replacement project has passed the tests and complied with the standards set by PUB. Hence, its performance should not be affected with the replacement.

8. What does a typical water closet replacement involve? How long does it take?

A water closet replacement typically involves the following steps:

Water Closet Replacement



Replacement of a sitting WC will take about 3 hours for each water closet. The sealant will take about 2 hours to dry after application before you can use the new water efficient WC.

Replacement of a squatting WC can take up to a week as it involves additional works such as hacking to remove the existing structure and relay of waterproofing, cementing and laying of new tiles on affected areas around the water closet.