

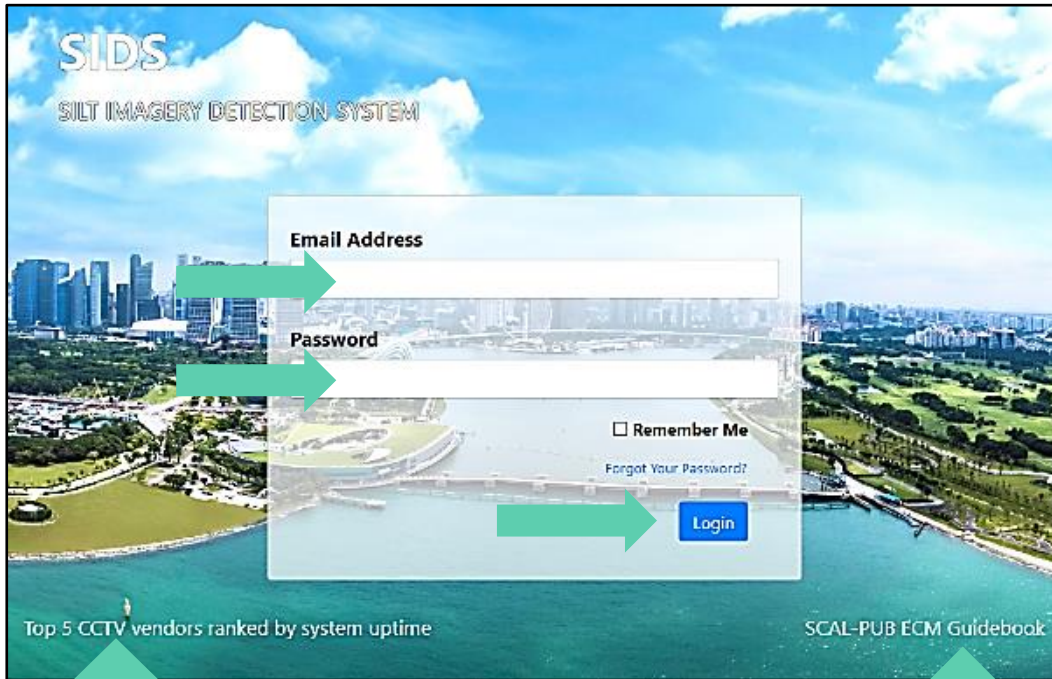
# SIDS Contractor User Manual

**CONTENTS**

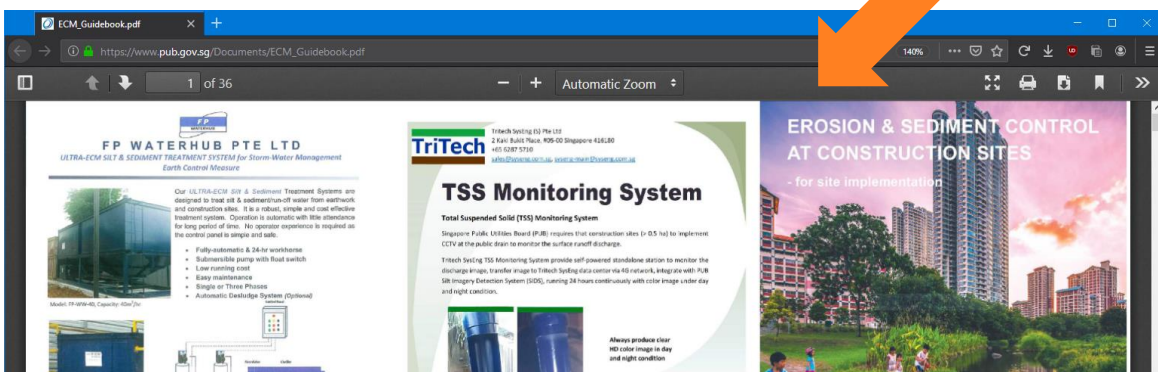
Login to SIDS..... 2  
     Success Login ..... 3  
 Recover password..... 4  
 Top Menu ..... 5  
     Map View ..... 6  
         Map Interaction from Map View ..... 7  
     Filter function ..... 8  
     Table View ..... 9  
     Mosaic View..... 10  
     Account Setting ..... 11  
     Logout ..... 12  
 CCTV Menu..... 13  
     Daily View ..... 14  
         Select Date from Daily View ..... 15  
         Select Different CCTV from Daily View ..... 16  
         Zoom Image from Daily View..... 17  
         Enter Hourly View from Daily View ..... 18  
         Bottom Information from Daily View..... 19  
     Hourly View ..... 20  
     Chart View ..... 21  
     Export..... 22  
     ROI Audit Log..... 23  
         Region of Interest (ROI)..... 24  
 Monitoring, maintenance and troubleshooting of CCTV including CCTV down, no/poor image, poor blue marker, ROI shift by vendor and contractor ..... 25  
 Revision History ..... 31

LOGIN TO SIDS

To access SIDS web site, please visit <https://sids.emonitoringsystem.com/login>, then enter email address and password, then click [LOGIN] button.



Vendor Company	Email	Contact
Tritech Syseng (S) Pte Ltd	sales@syseng.com.sg	62875710
Absolute Instrument Systems Pte Ltd	sales@aisys.com.sg	62968012
Y.H.H. Trade & Technologies Pte Ltd	chenghong@yh.com.sg	96431893
Envprotech Pte. Ltd.	sweechow_ng@singnet.com.sg	96272500
Flexi Systems (Singapore) Pte Ltd	sales@flexisystems.com.sg	81891788



Click on [Top 5 CCTV vendors ranked by system uptime] to show the top 5 CCTV vendors table.

Click on [SCAL-PUB ECM Guidebook] to download the pdf guide book.

SUCCESS LOGIN

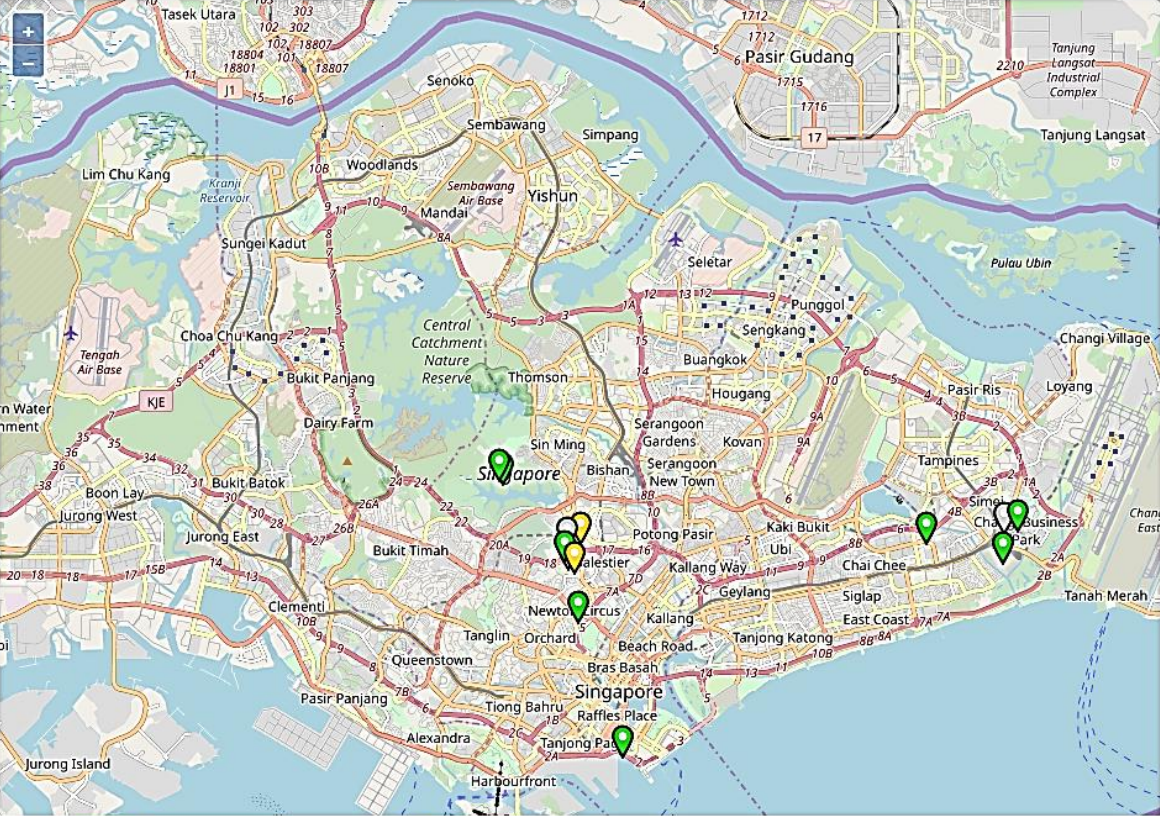
If email and password entered correctly, you will see a map page.

Map View Table View Mosaic View Account Setting Logout

Filter

Catchment Contractor Developer Vendor Status

Project title

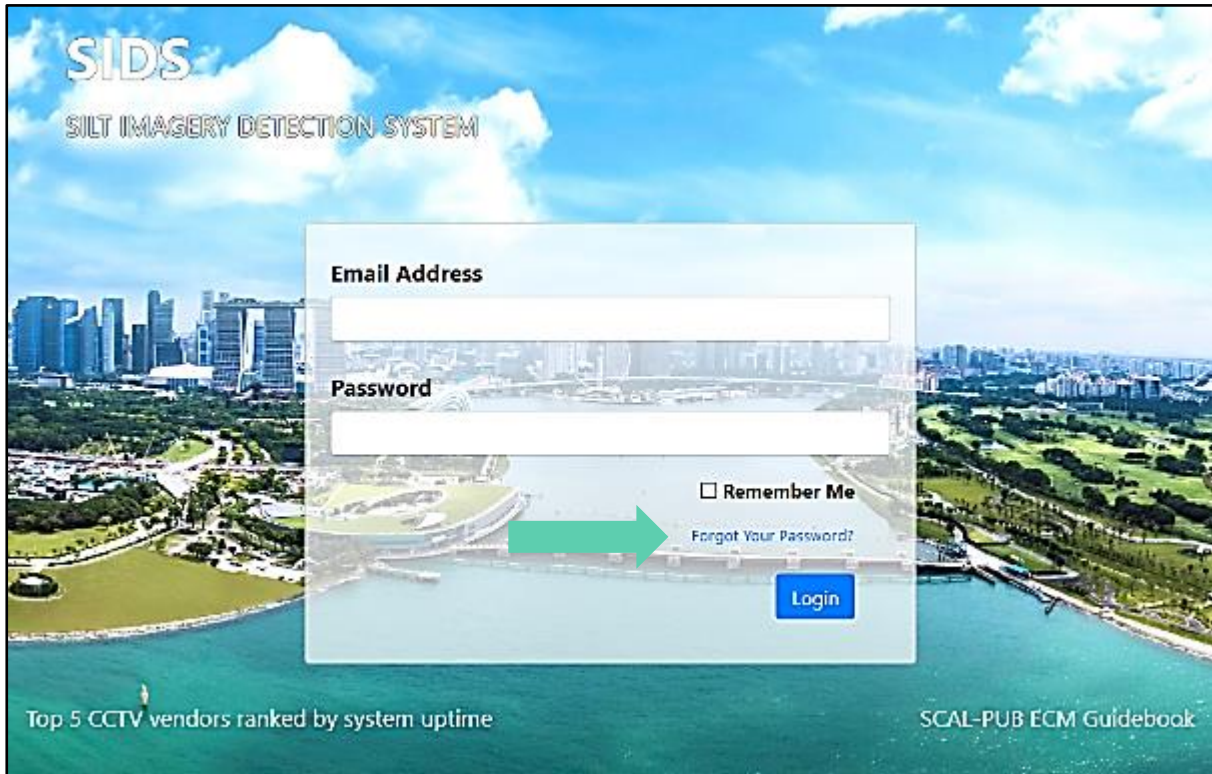


Status: OK NOT READY TIMEOUT RETIRED

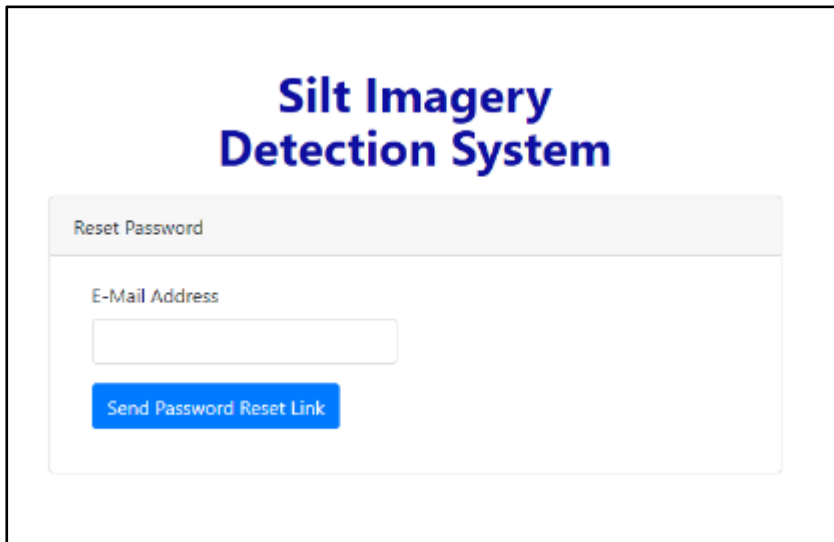
The image shows a web interface for a map application. At the top, there are navigation links: 'Map View', 'Table View', 'Mosaic View', 'Account Setting', and 'Logout'. Below this is a 'Filter' section with five dropdown menus: 'Catchment', 'Contractor', 'Developer', 'Vendor', and 'Status'. A text input field for 'Project title' is also present. The main area is a map of Singapore, with several colored pins (green, yellow, and red) indicating project locations. At the bottom, there is a 'Status' legend with four buttons: 'OK' (green), 'NOT READY' (yellow), 'TIMEOUT' (grey), and 'RETIRED' (orange).

## RECOVER PASSWORD

If you forgot the password, click the “Forgot Your Password?”.



Enter your email address same as the login email address, click “Send Password Reset Link”. An email will send out. Check your email and follow the email to create a new password.



## TOP MENU

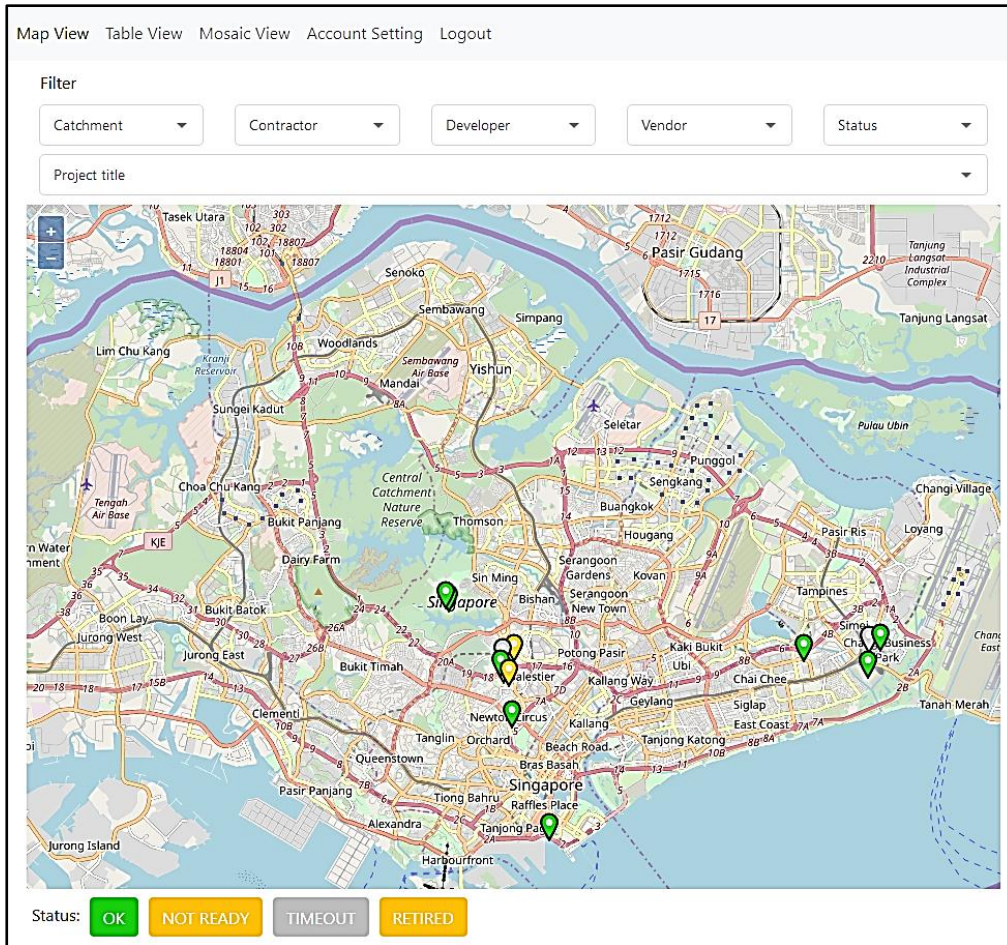
Top menu consists of common functions for all users

Map View Table View Mosaic View Account Setting Logout

- Map view, table view, and mosaic view - provide different CCTV presentation.
- Account Setting - provide user own account setting
- Logout – user logout

MAP VIEW

Map view shows all CCTV station locations on a map.

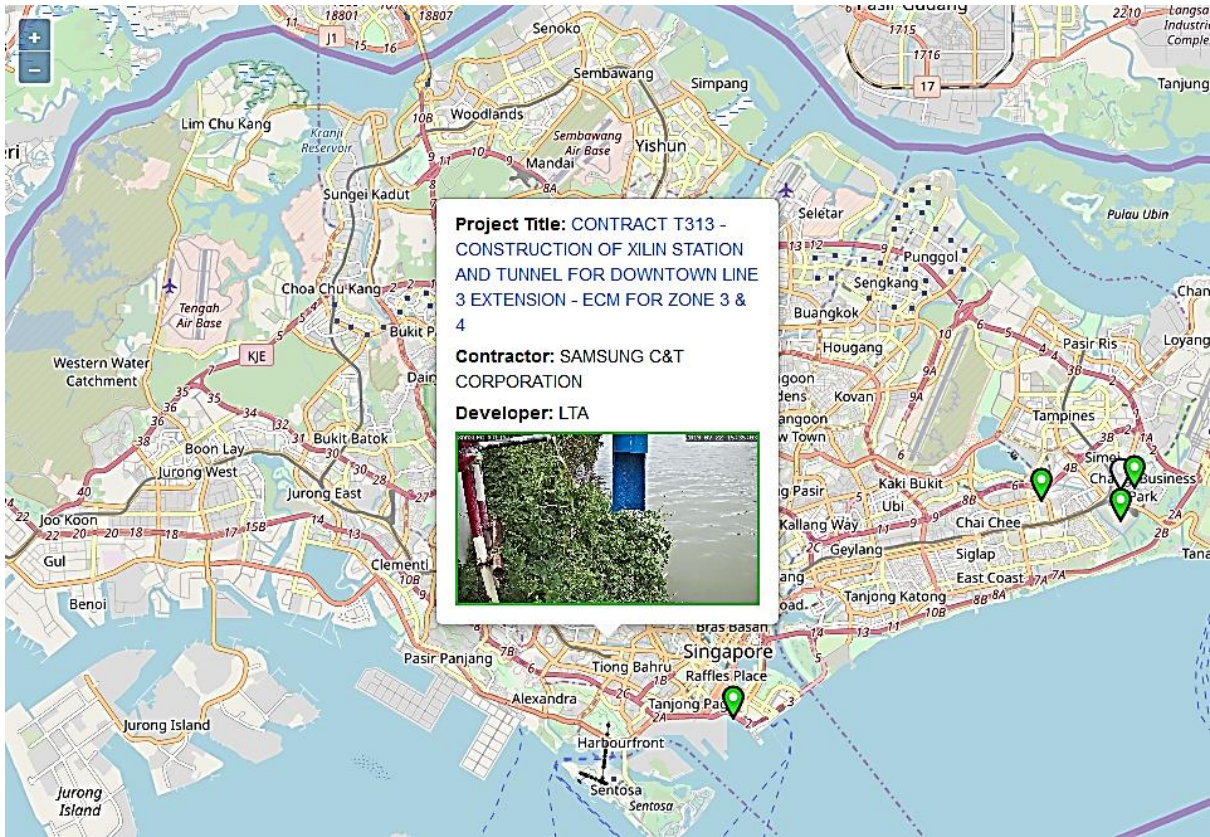


Icon colour indicate CCTV latest result

ICON	Remark
OK	Station is running and no silty discharge detected
VIEW ONLY	Other source of CCTV. No blue marker present
NOT OK	Station is running and silty discharge detected
NOT READY	CCTV not yet linked to SIDS
NO NEW IMAGE	Station is not updating new image at current time
CCTV ERROR	Vendor server is working at current time
RETIRED	Station that is decommissioned
TIMEOUT	Station is not running well for more than an hour. If last hour data have more than 50% downtime, the station status will become "TIMEOUT". Only when the last hour downtime reduce to less than 25%, then status will not be "TIMEOUT"
CLEAR DISCHARGE	Station is running and clear water discharge detected
NEW SITE	

### MAP INTERACTION FROM MAP VIEW

Click on any station icon. A pop-up window will show station detail and latest image.



Click on "Project title text" will direct you to station daily view





**FILTER FUNCTION**

Filter function provide quick way to hide unwanted station. User can filter stations by these attributes.

**Filter**

Catchment	Contractor	Developer	Vendor	Status
Project title				

**TABLE VIEW**

Table view shows all CCTV stations in a tabular form. Click on the column header can sort table row by alphanumeric order.

Map View Table View Mosaic View Account Setting Logout

**Filter**

Catchment Contractor Developer Vendor Status

Project title

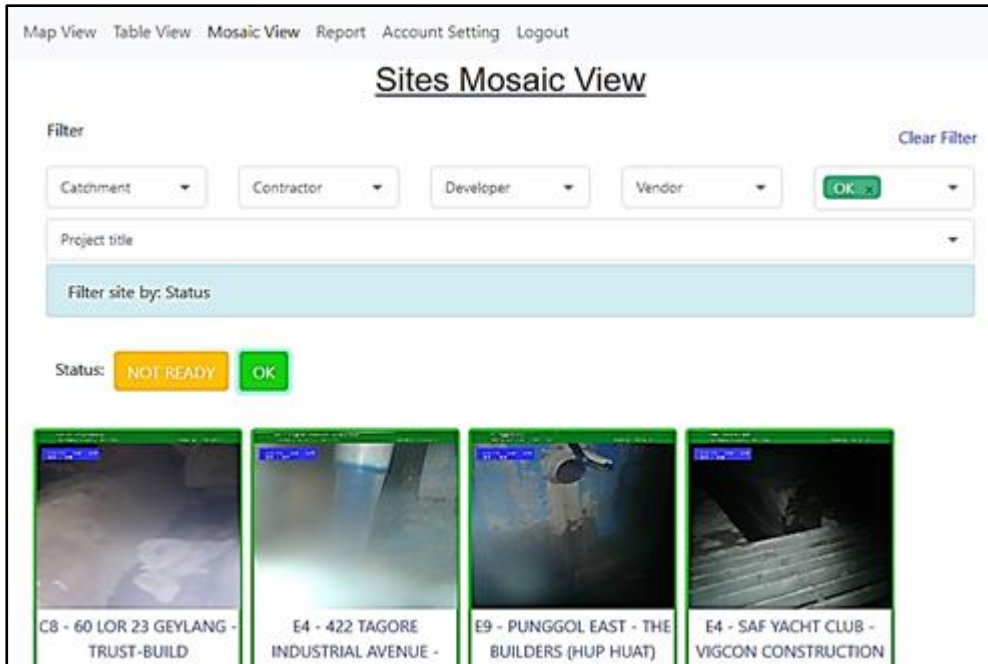
Search (View Group, Station Name)

Status: NOT OK

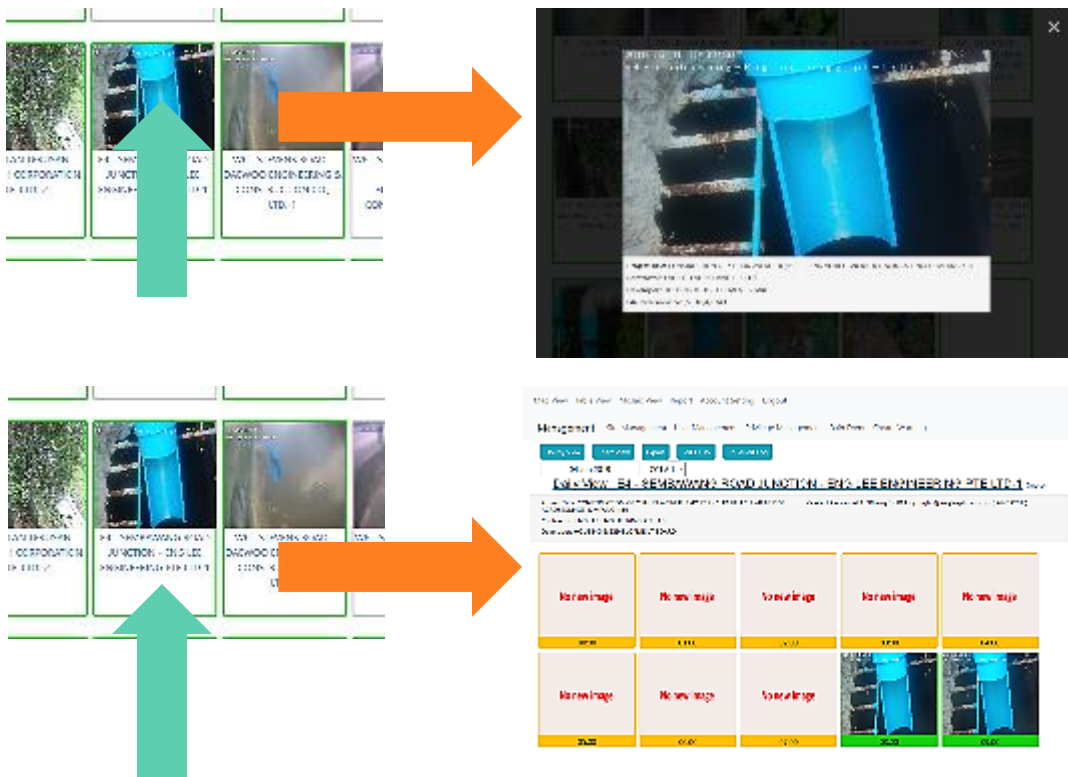
Station Name	Last Update	Status
W6 - SERANGOON ROAD - KIMLY CONSTRUCTION PTE LTD-1	2019-06-05 20:50:00	<span style="background-color: red; color: white; padding: 2px 5px;">NOT OK</span>

MOSAIC VIEW

Mosaic view shows all CCTV station images from vendor servers.

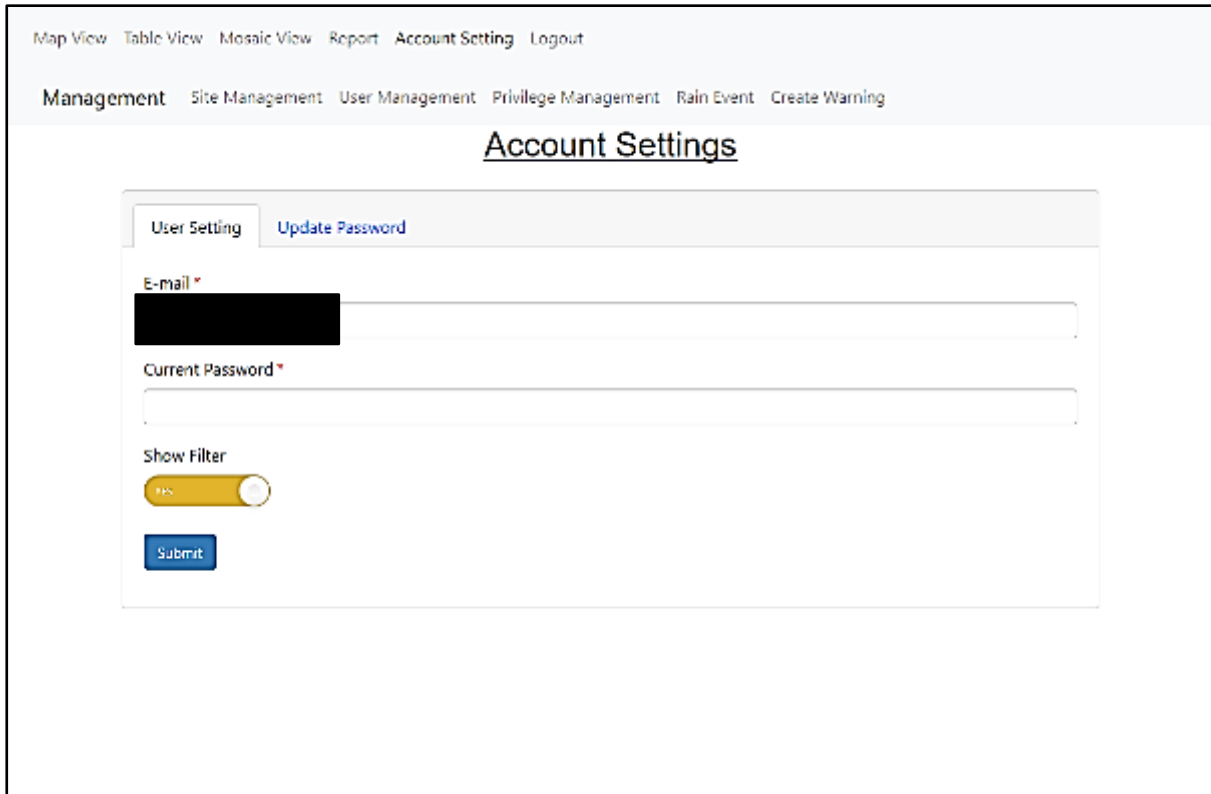


Click on image will show larger image. Click on text will direct user to daily view

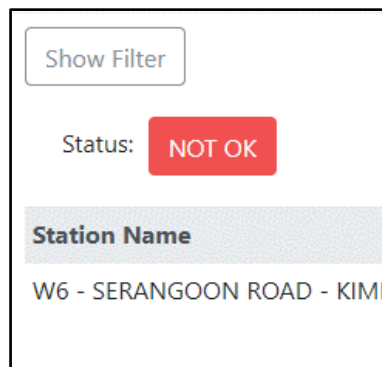
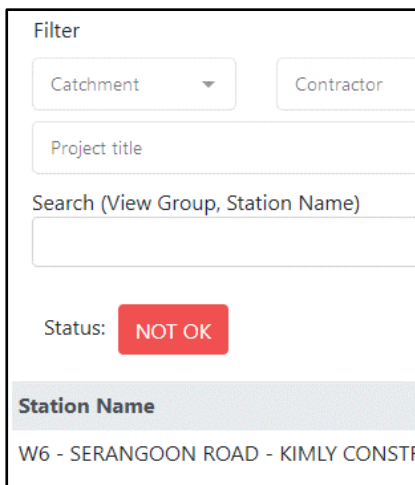


ACCOUNT SETTING

Account setting allow you to update email and password.



“Show Filter” allow you to enables filter function.



## LOGOUT

Logout function let you immediately logout SIDS. You will need to login again to access SIDS.

## CCTV MENU

CCTV menu provide these functions:

- Daily view – Show every first image from every hour per day
- Hourly View - Shows every images in a given hour
- Chart View - Display image status in a bar chart
- Export - Export a selection of images
- ROI Audit Log - Review ROI changes

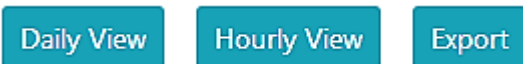
Functions available in daily view



Functions available in hourly view



Functions available in chart view



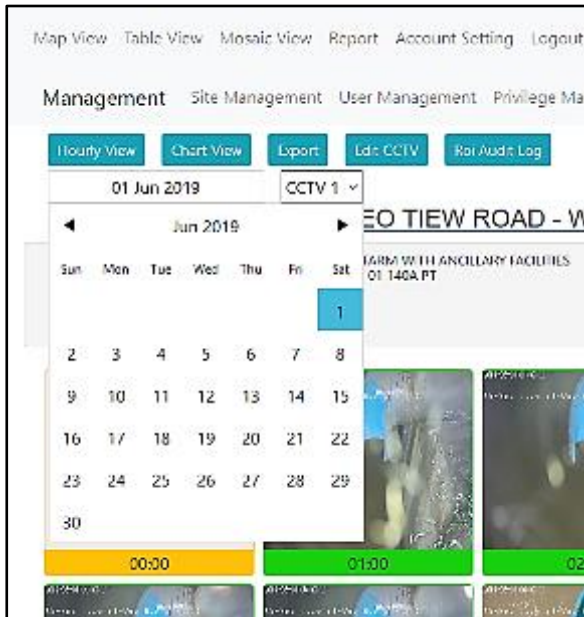
## DAILY VIEW

Daily view shows every first image from every hour per day.

The screenshot shows the 'Daily View' interface for a construction site. At the top, there are navigation links: 'Map View', 'Table View', 'Alarms View', 'Report', 'Advanced Settings', and 'Logout'. Below these are management options: 'The Management', 'User Management', 'Role Management', 'Role Form', and 'Device Setting'. There are also buttons for 'Refresh View', 'Clear View', 'Print', 'Full Screen', and 'Exit Full Screen'. The main heading is 'Daily View : W2 - NEO TIEW ROAD - WEE HUR CONSTRUCTION PTE LTD-1'. Below the heading, there is a list of IP addresses and a URL. The main content is a grid of 24 camera images, one for each hour of the day. The first image is labeled 'No new image'. The images show a construction site with a blue crane. Below the grid is a map and a larger image of the camera feed. The URL at the bottom is <http://www.wall.com.sg/W2-NeoTiewRoad/W2-1-Camera-Live.aspx>.

### SELECT DATE FROM DAILY VIEW

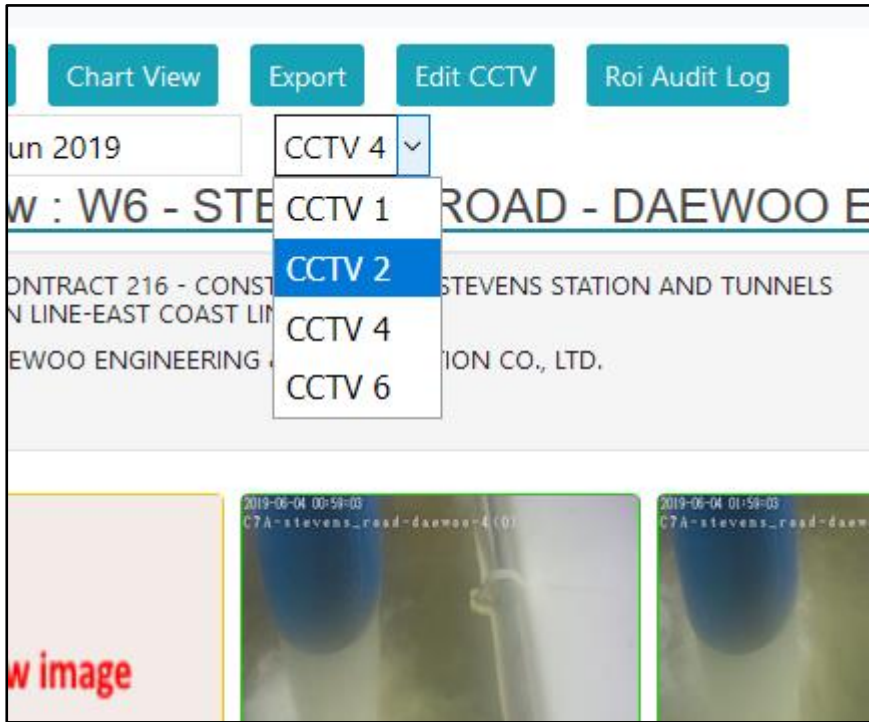
To see any image from any date, click on calendar and select a date.





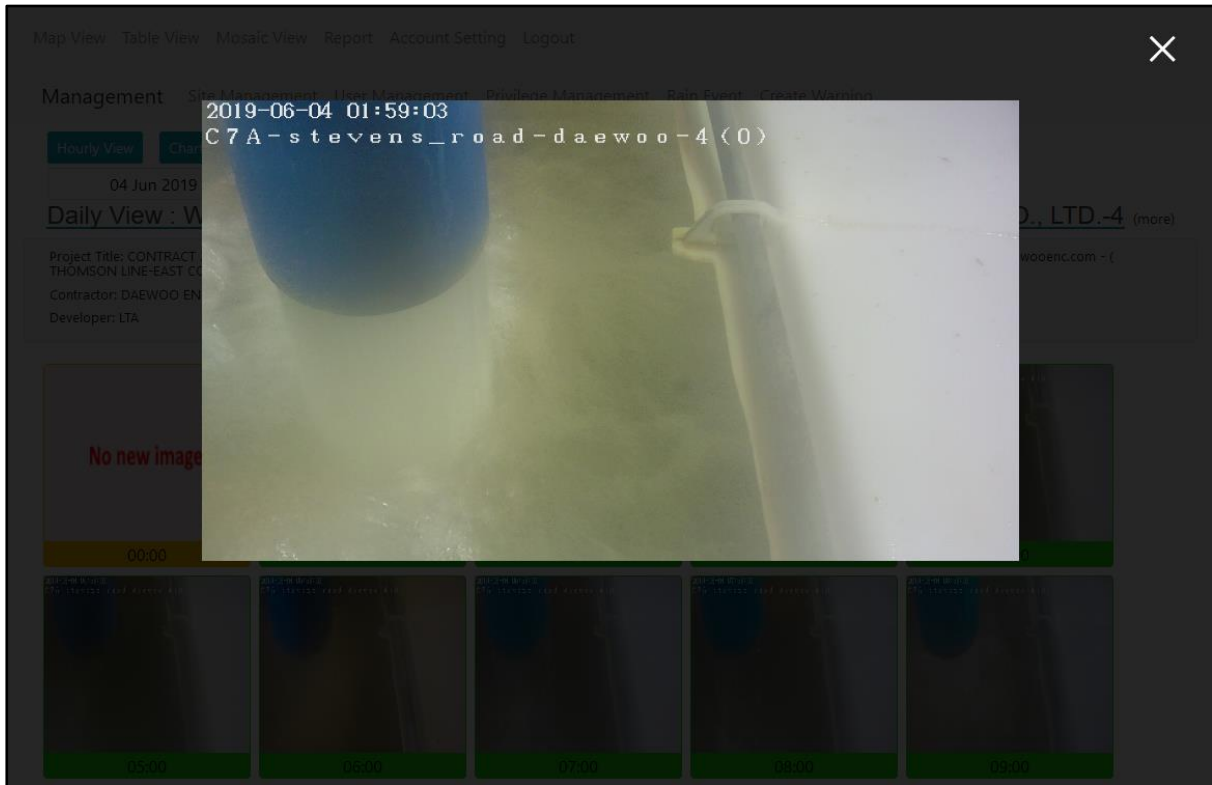
SELECT DIFFERENT CCTV FROM DAILY VIEW

Some construction site has more than one CCTV station. To see other CCTV, select the desired CCTV from the dropdown menu.



### ZOOM IMAGE FROM DAILY VIEW

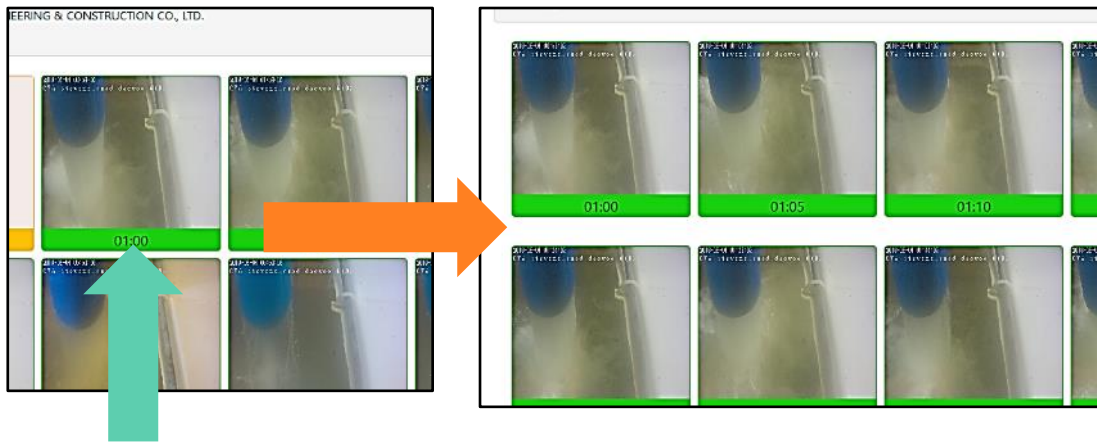
Click on any image display a larger image.



---

### ENTER HOURLY VIEW FROM DAILY VIEW

Click on the hour text will direct user to hourly view.



---

#### BOTTOM INFORMATION FROM DAILY VIEW

At the bottom of the page, there are two images. One for map location, another for ROI mask reference.

Bottom of the images is the direct link to vendor server. To directly access vendor server image, click the link. If the link is able to access the latest CCTV image but image on SIDS shows 'CCTV error' or 'No New Image', inform PUB Admin.



## HOURLY VIEW

Hourly view shows all images in an hour windows.

Map View Table View Mosaic View Account Setting Logout

Daily View Chart View Export Roi Audit Log


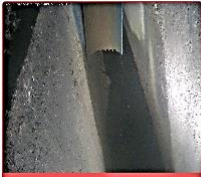


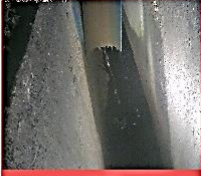







27 May 2019 13 : 0 CCTV 1



### Hourly View : W6 - SERANGOON ROAD - KIMLY CONSTRUCTION PTE LTD-1

Project Title: PROPOSED ERECTION OF 19- STOREY COMMERCIAL DEVELOPMENT COMPRISING A 5-STOREY PODIUM OF RETAIL, CAR PARK AND COMMUNAL FACILITIES & A 14 STOREY TOWER OF OFFICE AND MEDICAL SUITE ON LOT 1444M TS 17 AT SERANGOON ROAD(KALLANG PLANNING AREA)

Contact Personnel 1: "Francis Teo" - ECO - francisteo@kimly.com.sg - ( 96706907 )

Contractor: KIMLY CONSTRUCTION PTE LTD  
Developer: FEATURE DEVELOPMENT PTE LTD

 13:00	 13:05	 13:10	 13:15
 13:20	 13:25	 13:30	 13:35
 13:40	 13:45	 13:50	 13:55

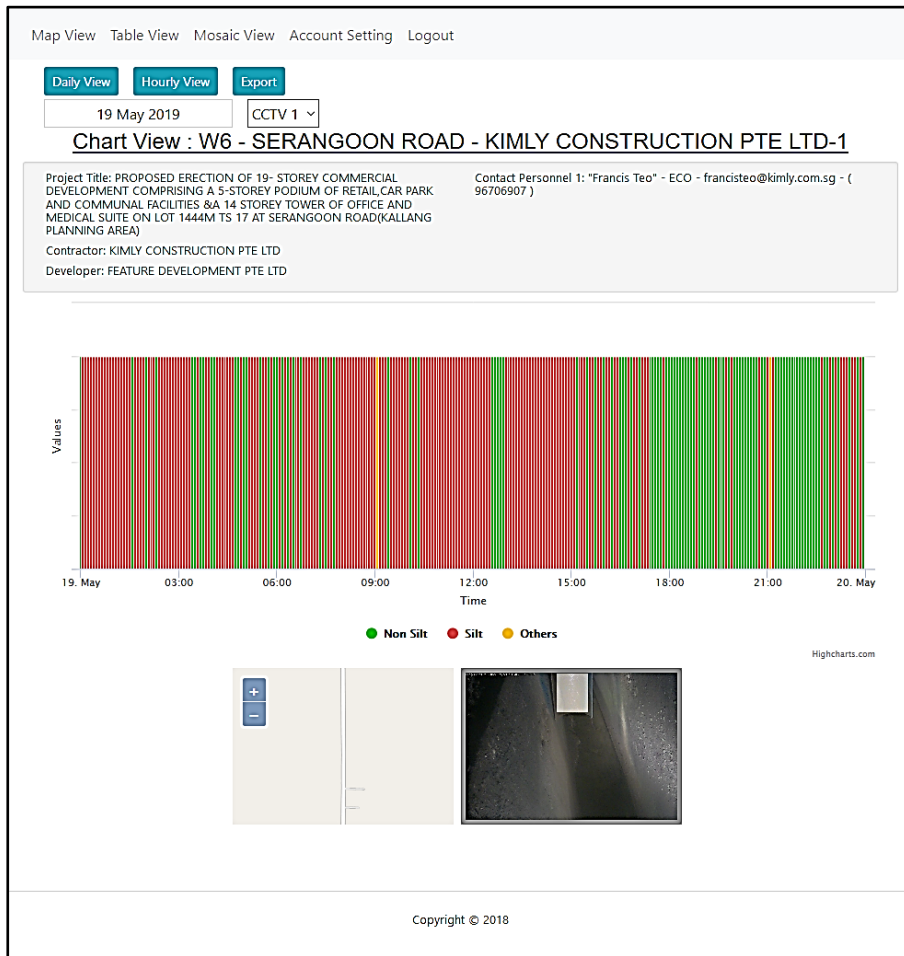
 

[http://www.noiselynwater.com/AIS/C8-320\\_Serangoon\\_Road-Kimly-01/current\\_img.jpg](http://www.noiselynwater.com/AIS/C8-320_Serangoon_Road-Kimly-01/current_img.jpg)

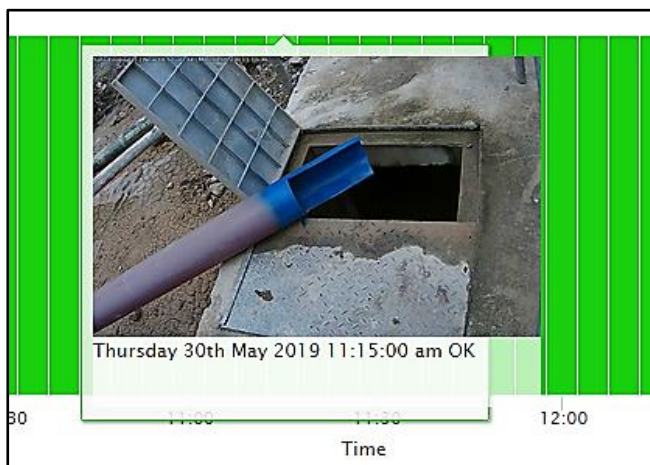
Copyright © 2018

## CHART VIEW

Chart view shows all image statuses in a bar chart for a given day. Chart can be dragged and zoom in. Each individual bar represents an image at 5 min interval.

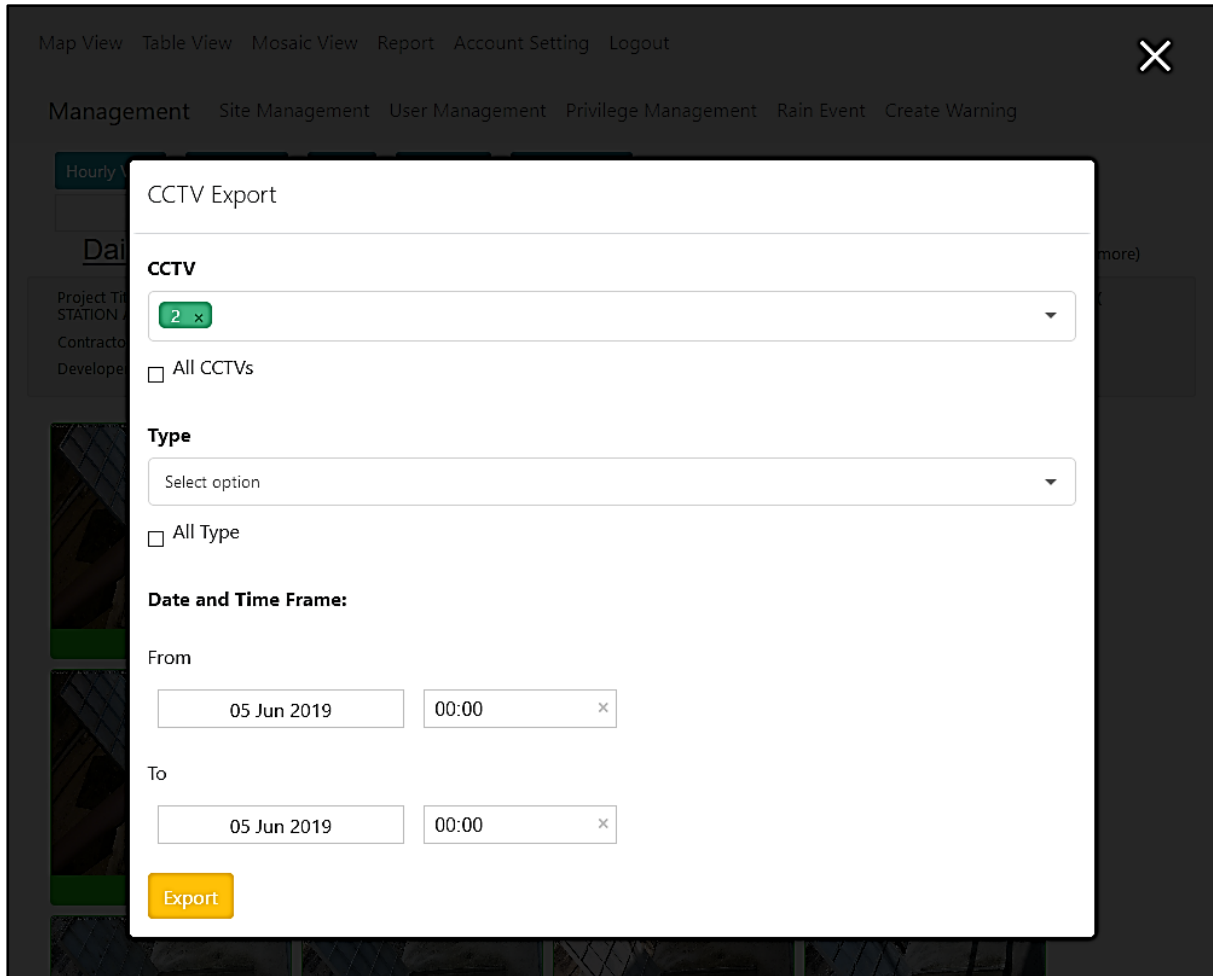


Mouse over bar will display that image.



## EXPORT

Export function let user download a collection of images.



User can select multiple CCTVs from the same site, filter by image status and specify a range of time to export the images.

ROI AUDIT LOG

ROI audit log let user to see past mask setup.

Map View Table View Mosaic View Report Account Setting Logout

Management Site Management User Management Privilege Management Rain Event Create Warning

Go Back

C5 - UPPER THOMSON ROAD - SATO KOGYO (S) PTE. LTD.-2

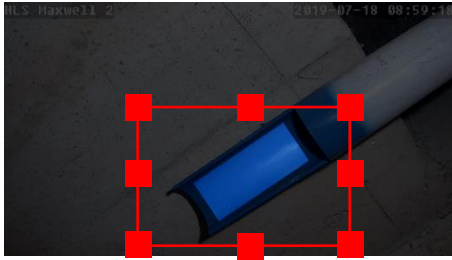
Updated at	Updated by	Image
2019-06-05 15:28:30	[REDACTED]	
2019-04-23 15:24:34	[REDACTED]	



## REGION OF INTEREST (ROI)



Region of interest (ROI) refer to the blue marker area.



User need to indicate this area, so that SIDS background process knows where to find the ROI.



Once ROI is defined, SIDS backend process will check if discharge is silty.

**MONITORING, MAINTENANCE AND TROUBLESHOOTING OF CCTV INCLUDING CCTV DOWN, NO/POOR IMAGE, POOR BLUE MARKER, ROI SHIFT BY VENDOR AND CONTRACTOR**

Image quality	Lighting	Marker	Mounting
Dirty lens/cover	B&W	Stained	Viewing angle
Unfocused	Too Dark/Bright	No marker	Obstruction
Washed-up	Backlight	Too far/small	
		Too thin	

This is a general guide to verify CCTV image setup. The table above shows most common issue for causing SIDS image analysis false detection failure.

Examples for reference:



Image quality	Lighting	Marker	Mounting
Dirty lens/cover	B&W	Stained	Viewing angle
Unfocused	Too Dark/Bright	No marker	Obstruction
Washed-up	Backlight	Too far/small	
		Too thin	



Image quality	Lighting	Marker	Mounting
Dirty lens/cover	B&W	Stained	Viewing angle
<b>Unfocused</b>	Too Dark/Bright	No marker	Obstruction
Washed-up	Backlight	Too far/small	
		Too thin	



Image quality	Lighting	Marker	Mounting
Dirty lens/cover	B&W	Stained	Viewing angle
Unfocused	Too Dark/Bright	No marker	Obstruction
<b>Washed-up</b>	Backlight	Too far/small	
		Too thin	

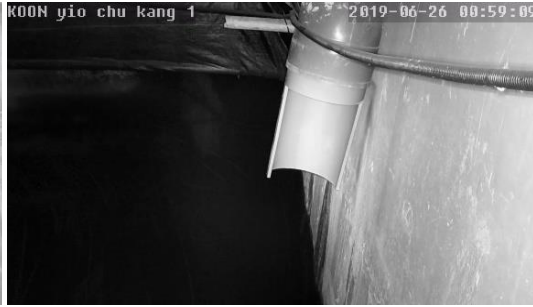


Image quality	Lighting	Marker	Mounting
Dirty lens/cover	B&W	Stained	Viewing angle
Unfocused	Too Dark/Bright	No marker	Obstruction
Washed-up	Backlight	Too far/small	
		Too thin	



Image quality	Lighting	Marker	Mounting
Dirty lens/cover	B&W	Stained	Viewing angle
Unfocused	Too Dark/Bright	No marker	Obstruction
Washed-up	Backlight	Too far/small	
		Too thin	



Image quality	Lighting	Marker	Mounting
Dirty lens/cover	B&W	Stained	Viewing angle
Unfocused	Too Dark/Bright	No marker	Obstruction
Washed-up	Backlight	Too far/small	
		Too thin	



Image quality	Lighting	Marker	Mounting
Dirty lens/cover	B&W	Stained	Viewing angle
Unfocused	Too Dark/Bright	No marker	Obstruction
Washed-up	Backlight	Too far/small	
		Too thin	

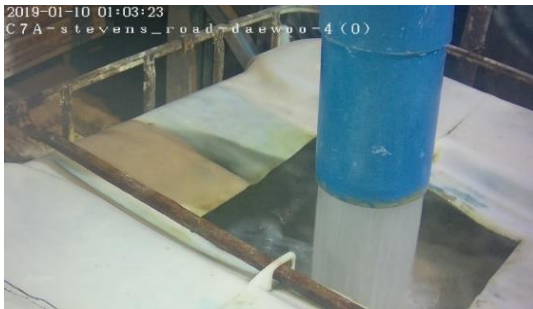


Image quality	Lighting	Marker	Mounting
Dirty lens/cover	B&W	Stained	Viewing angle
Unfocused	Too Dark/Bright	No marker	Obstruction
Washed-up	Backlight	Too far/small	
		Too thin	



Image quality	Lighting	Marker	Mounting
Dirty lens/cover	B&W	Stained	Viewing angle
Unfocused	Too Dark/Bright	No marker	Obstruction
Washed-up	Backlight	Too far/small	
		Too thin	



Image quality	Lighting	Marker	Mounting
Dirty lens/cover	B&W	Stained	Viewing angle
Unfocused	Too Dark/Bright	No marker	Obstruction
Washed-up	Backlight	Too far/small	
		Too thin	



Image quality	Lighting	Marker	Mounting
Dirty lens/cover	B&W	Stained	Viewing angle
Unfocused	Too Dark/Bright	No marker	Obstruction
Washed-up	Backlight	Too far/small	
		Too thin	

**REVISION HISTORY**

Rev No	Date	Remark
1	2019-06-28	First draft
1.1	2019-07-22	First review