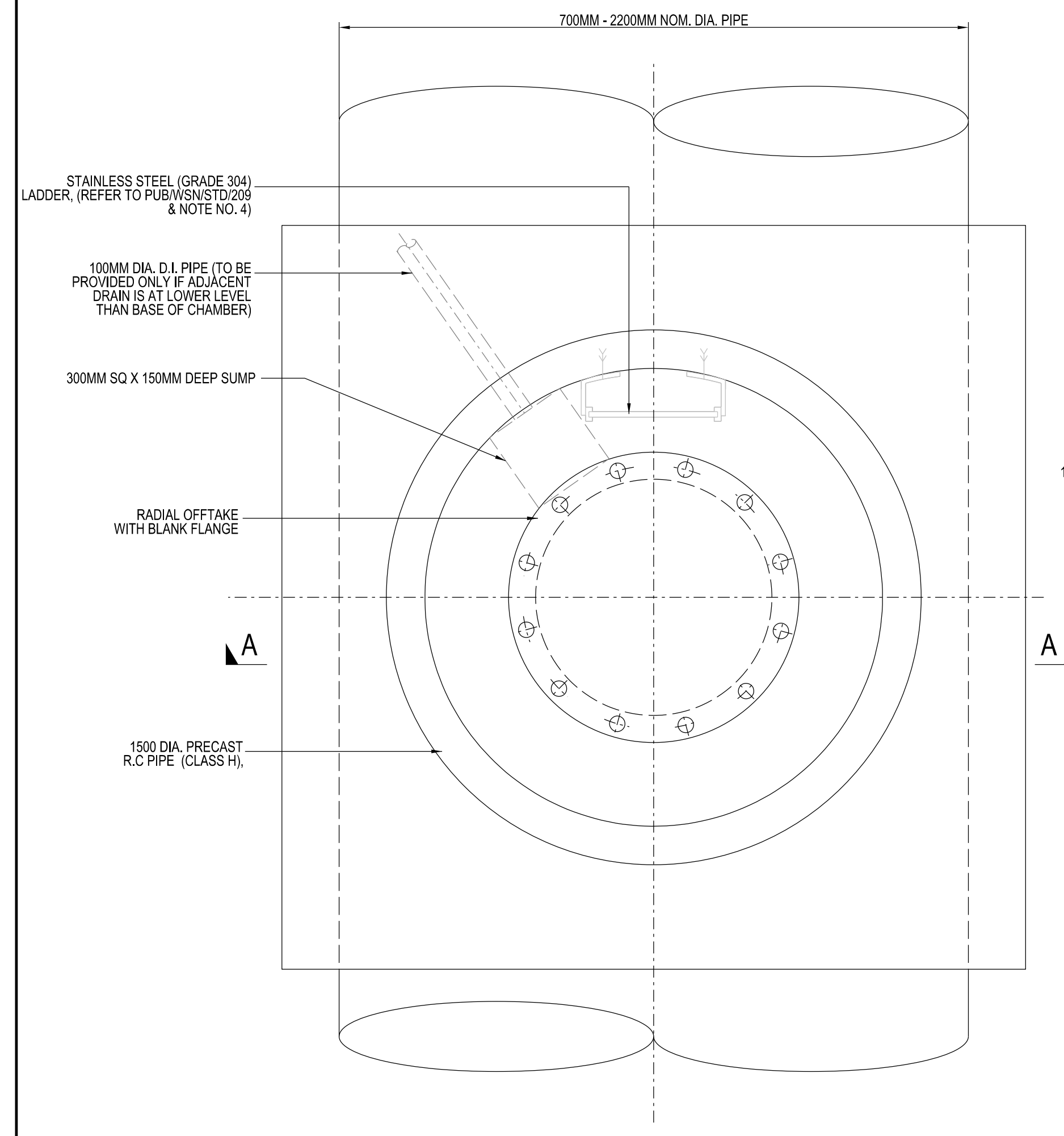


- NOTES:
1. ALL DIMENSIONS ARE IN MILLIMETRES UNLESS OTHERWISE STATED.
 2. THE CONTRACTOR SHALL REFER TO THE GENERAL NOTES IN DRAWING NO. PUB/WSN/001.
 3. ALL CHAMBERS INCLUDING RC. HAUNCHING AND CLADDING SHALL BE DESIGNED AND ENDORSED BY A PROFESSIONAL ENGINEER (P.E) AND SUBMITTED TO THE BOARD FOR APPROVAL.
 4. SAFETY CAGES SHALL BE INSTALLED FOR ALL STAINLESS STEEL LADDERS (GRADE 304) EXCEEDING 3M HEIGHT.
 5. THE CONSULTANT'S P.E. SHALL UNDERTAKE DETAILED CALCULATIONS TO DETERMINE THE DETAILS OF THE REBAR REQUIRED AND SUBMIT (TOGETHER WITH THE ACCREDITED CHECKER, APPOINTED BY THE BOARD) TO BCA FOR APPROVAL.

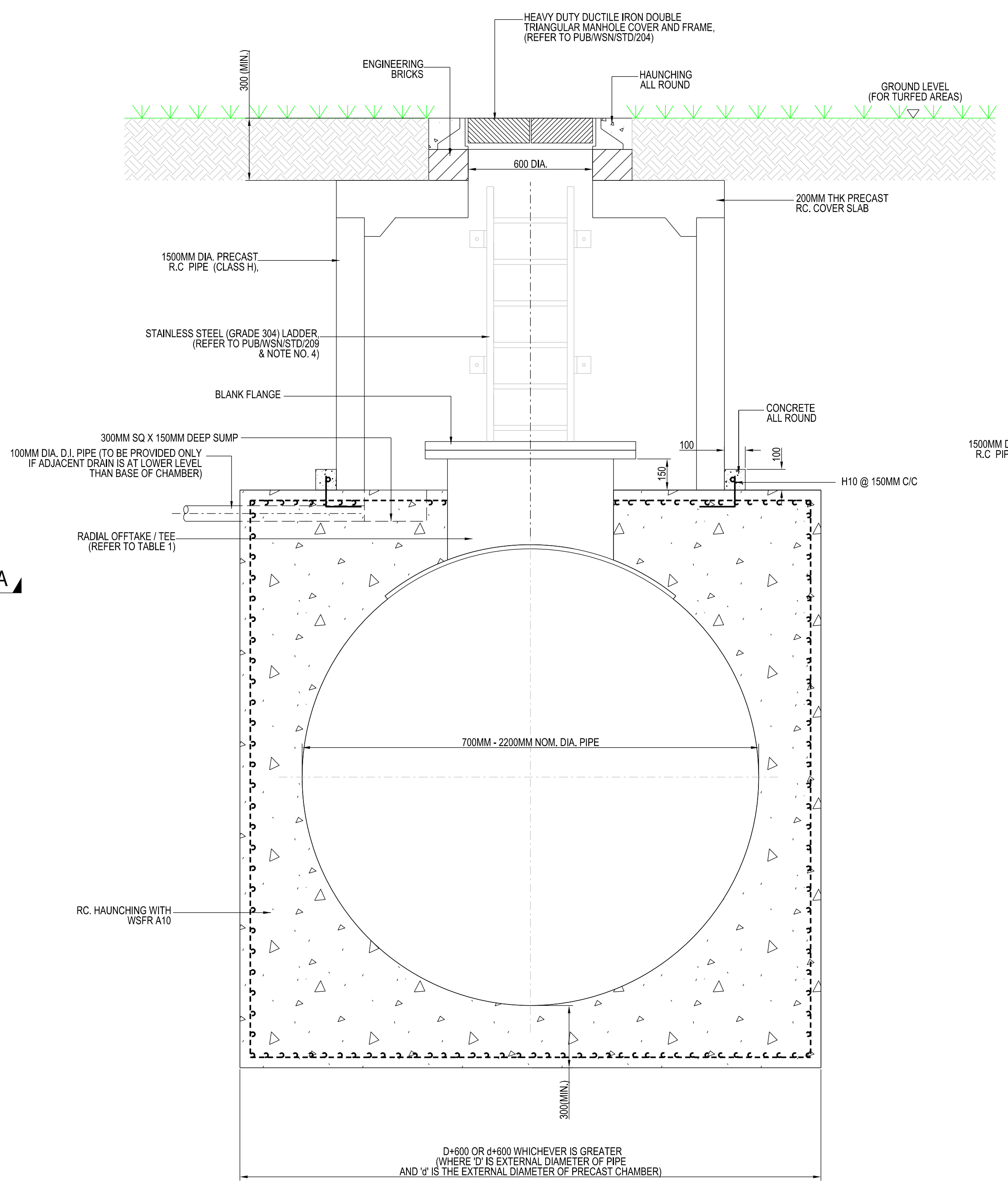


PLAN
ACCESS MANHOLE CHAMBER (UP TO 6M DEPTH)
(PIPE NOMINAL DIAMETER 700MM - 2200MM)

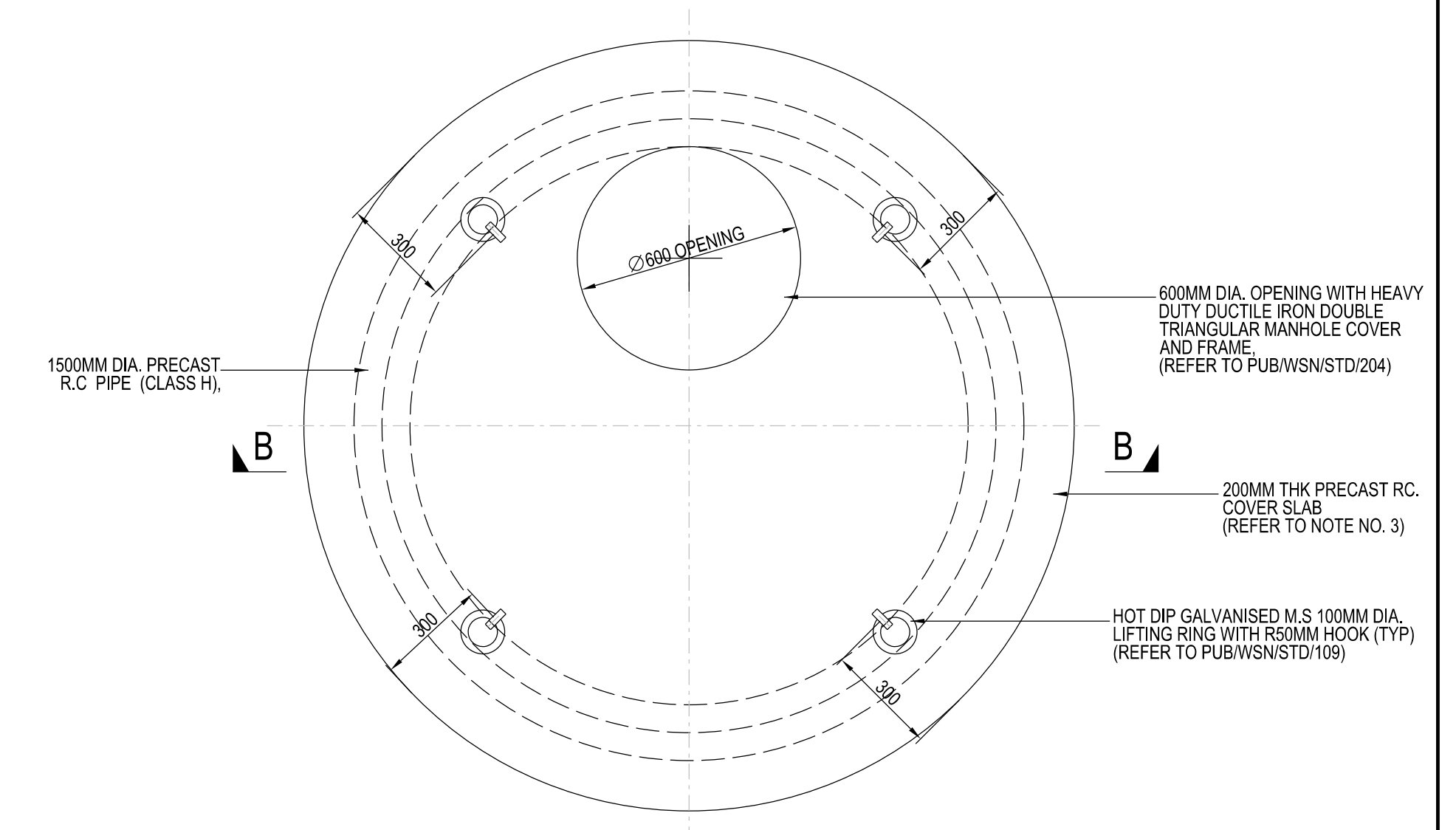
NOTE:
 1) FOR DIMENSIONS OF RADIAL OFFTAKE / TEE, REFER TO TABLE 1 BELOW.
 2) FOR DIMENSIONS OF BLANK FLANGE REFER TO TABLE 7 IN DRAWING NO: PUB/WSN/STD/001.

TABLE 1 : ACCESS MANHOLE CHAMBER

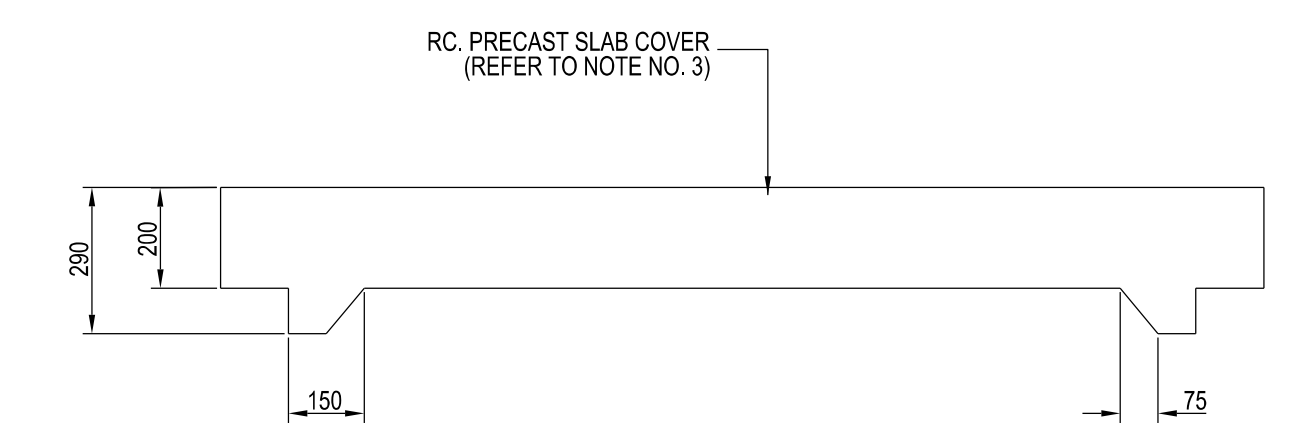
PIPE NOM. DIA. (MM)	RADIAL OFFTAKE / TEE DIA. (MM)	PRECAST R.C PIPE DIA. (MM)	INTERVAL ALONG PIPELINE (M)
700	700 (TEE)	1500	100
800	800 (TEE)	1500	100
900	800 (TEE)	1500	100
1200	800 (TEE)	1500	200
1400	800 (TEE)	1500	200
1600	800 (RADIAL OFFTAKE)	1500	300
1800	800 (RADIAL OFFTAKE)	1500	300
1900	800 (RADIAL OFFTAKE)	1500	300
2200	800 (RADIAL OFFTAKE)	1500	300



SECTION A - A



PLAN
DETAILS OF PRECAST R.C COVER SLAB



SECTION B - B

ISSUED: SEP 2020

SCALE

DRAWING NO.

LAST REVIEWED: AUG 2021

1:15

PUB/WSN/STD/101

TYPICAL ACCESS MANHOLE CHAMBER (UP TO 6M DEPTH)