

BUILDING OPENING

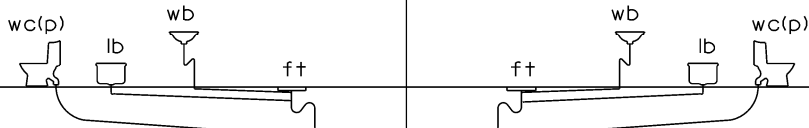
MIN 3000mm AWAY FROM ANY WINDOW OR BUILDING OPENING

GUARD

Ø100mm VENTILATING STACKS TO TERMINATE AIR (REFER TO CLAUSE 4.3.6) WITH THE FOLLOWING MINIMUM HEIGHT:

- (I) 150mm ABOVE HIGHEST SLOPING ROOF
- (II) 150mm ABOVE THE PARAPET WALL OF FLAT ROOF
- (III) 2500mm ABOVE ROOF AREAS DESIGNATED FOR COMMON USE

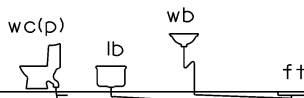
ROOF



UPPER STOREY

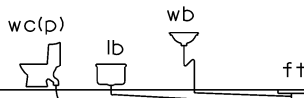
MIN Ø150mm DISCHARGE STACK

MIN Ø100mm DISCHARGE STACK (FOR LANDED HOUSING UP TO 4th STOREY)



THIRD STOREY

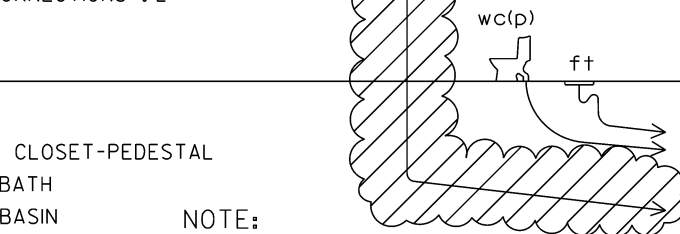
Ø100mm DISCHARGE PIPE



SECOND STOREY

MAX 2500mm
MAX NO. OF CONNECTIONS : 2

NO DISCHARGE PIPE CONNECTION AT SHADED AREA ALL THE WAY TO IC



FIRST STOREY/GROUND FLOOR

TO INSPECTION CHAMBER (SEE DRAWING NO. 3-2b FOR DISCHARGE PIPE AT GROUND LEVEL TO IC) (SEE DRAWING NO. 3-22b FOR DISCHARGE STACK TO IC)

LEGEND :

- wc (p) — WATER CLOSET-PEDESTAL
- lb — LONG BATH
- wb — WASH BASIN
- ft — FLOOR TRAP

NOTE:

I. FLOOR TRAP SERVING KITCHEN SINK SHALL NOT BE CONNECTED TO DISCHARGE STACK/PIPE RECEIVING FLOW FROM TOILET, EXCEPT FOR LANDED RESIDENTIAL HOUSE (DETACHED, SEMI-DETACHED AND TERRACED HOUSE)

ALL DIMENSIONS ARE IN mm.

ISSUED: DEC 2021

SCALES

NOT TO SCALE

LAST REVIEWED: NOV 2021

SINGLE STACK SYSTEM FOR BUILDINGS UP TO 6 STOREYS