

BUILDING OPENING

MIN 3000mm AWAY FROM ANY WINDOW OR BUILDING OPENING

GUARD

Ø100mm VENTILATING STACKS TO TERMINATE IN OPEN AIR (REFER TO CLAUSE 4.3.6) WITH THE FOLLOWING MINIMUM HEIGHT:

- (I) 150mm ABOVE HIGHEST SLOPING ROOF
- (II) 150mm ABOVE THE PARAPET WALL OF FLAT ROOF
- (III) 2500mm ABOVE ROOF AREAS DESIGNATED FOR COMMON USE

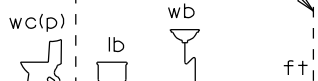
ROOF

CONNECTION OF VENTILATING STACK TO DISCHARGE STACK AT A POINT NOT LESS THAN 150mm ABOVE THE SPILL OVER LEVEL OF THE TOP MOST SOIL SANITARY APPLIANCE OR FLOOR TRAP WHICHEVER IS HIGHER



FOURTH STOREY

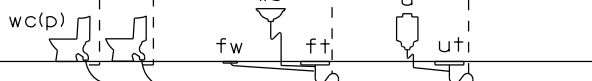
Ø50mm VENTILATING PIPE TO CONNECT TO VENTILATING STACK AT AN ANGLE OF 45° ABOVE SPILL OVER LEVEL OF SOIL SANITARY APPLIANCE OR FLOOR TRAP WHICHEVER IS HIGHER



THIRD STOREY

MIN Ø50mm VENTILATING STACK

MIN Ø100mm DISCHARGE STACK



SECOND STOREY

MIN Ø100mm DISCHARGE PIPE

NO DISCHARGE PIPE CONNECTION AT SHADED AREA ALL THE WAY TO IC



FIRST STOREY/GROUND FLOOR

TO INSPECTION CHAMBER

(SEE DRAWING NO. 3-2b FOR DISCHARGE PIPE AT GROUND FLOOR TO IC)  
(SEE DRAWING NO. 3-22b FOR DISCHARGE STACK TO IC)

**LEGEND :**

- wc (p) — WATER CLOSET-PEDESTAL
- lb — LONG BATH
- wb — WASH BASIN
- ft — FLOOR TRAP
- fw — FLOOR WASTE
- u — URINAL
- ut — URINAL TRAP

**NOTE:**

1. SEPARATE DISCHARGE STACK FOR KITCHEN AND TOILET IS NOT REQUIRED FOR LANDED HOUSES ( i.e. DETACHED, SEMI-DETACHED AND TERRACED HOUSE )
2. CROSS-VENT PIPE AT MID-HEIGHT OF THE BUILDING IS NOT REQUIRED.

ALL DIMENSIONS ARE IN mm.

ISSUED: DEC 2021

SCALES

NOT TO SCALE

FULLY VENTILATED SYSTEM  
(WITHOUT SECONDARY DISCHARGE STACK)  
FOR LANDED HOUSING



SINGAPORE'S NATIONAL WATER AGENCY

WATER RECLAMATION (NETWORK) DEPARTMENT

DRAWING NO. 3-15c

LAST REVIEWED: NOV 2021