



# WITCO ENVIROTECH PTE LTD

*Your Reliable Partner In Silt Control  
Treatment Management For Construction Site*

Witco Envirotech Pte Ltd provides a Total Solutions Treatment System towards water and waste water treatment with a mission to provide our customer with the best available technology and solution at the most cost-effective price for silt control in construction sites.

To meet the PUB legislation of 50mg/l of Total Suspended Solids discharge limits in construction sites.

Witco Envirotech specializes in:

## ULTRAFILTRATION SYSTEM



### **Benefits of Witco Ultrafiltration Systems**

- Compact /Small footprint, able to treat more than 2 discharge outlets due to certain terrain layouts.
- Easily transportable, can be mount on small trucks during emergency during sudden surge of run-off water.
- Chemical free during operation.
- Consistent treated water quality discharge.



*Capacity ranges from 3 m<sup>3</sup> / hr to 120 m<sup>3</sup> / hr*

### **WITCO ENVIROTECH PTE LTD**

52, Serangoon North Avenue 4, #04-01  
AEM-Ever Tech Building, Singapore 555853  
Tel: (65) 6482 0371, 6482 0630  
Fax : (65) 6481 3364, 6286 4658

Please contact us at:

Ronald Goh: 9617 6216, e-mail: [penghwa@singnet.com.sg](mailto:penghwa@singnet.com.sg)

Richard Seow: 9662 4610, e-mail: [witco@singnet.com.sg](mailto:witco@singnet.com.sg)



# WITCO ENVIROTECH PTE LTD

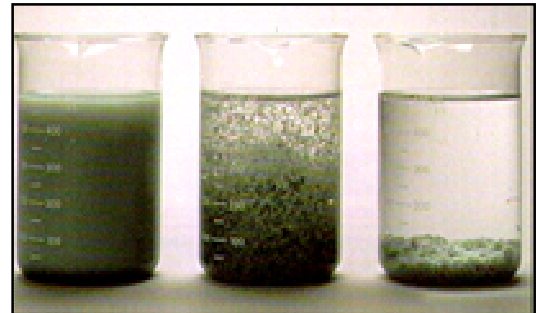
## PHYSICAL / CHEMICAL TREATMENT SYSTEM

Witco Envirotech physical/chemical treatment system is designed to treat high turbidity silt water discharge in construction site. It involves the use of coagulant and flocculants to precipitate all the silt particles in order to meet the PUB stringent requirement of 50 ppm discharge limits.



### **Benefits of Witco Physical/Chemical Treatment Plant:**

- Able to treat higher incoming TSS influent
- More cost effective for higher flow rate.
- Complete with walkways and safety railings platform.
- Simple and easy to operate.



*Capacity ranges from 10 m<sup>3</sup> / hr to 120 m<sup>3</sup> / hr*

### **WITCO ENVIROTECH PTE LTD**

52, Serangoon North Avenue 4, #04-01  
AEM-Ever Tech Building, Singapore 555853  
Tel: (65) 6482 0371, 6482 0630  
Fax : (65) 6481 3364, 6286 4658

Please contact us at:

Ronald Goh: 9617 6216, e-mail: [penghwa@singnet.com.sg](mailto:penghwa@singnet.com.sg)

Richard Seow: 9662 4610, e-mail: [witco@singnet.com.sg](mailto:witco@singnet.com.sg)